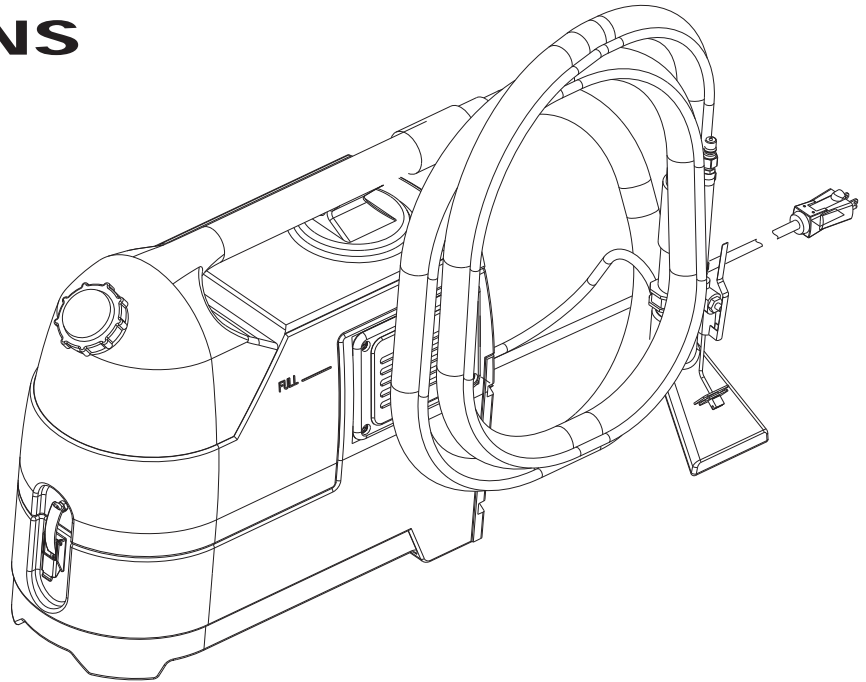




**MX 103 C
SPOTTER
220 - 240V
EU & UK**

**INFORMATION
&
OPERATING
INSTRUCTIONS**



IMPORTANT SAFETY INSTRUCTIONS

This machine is only suitable for commercial use, for example in hotels, schools, hospitals, factories, shops, and offices other than normal residential housekeeping purposes.

When using any electrical appliance, basic precautions should always be followed, including the following:

WARNING!

To reduce the risk of fire, electric shock, or injury:

- Do not leave the machine unattended when it is plugged-in. Unplug the unit from the power outlet when not in use.
- Always use a defoamer when foaming occurs to prevent damage to vacuum motor(s).
- Unplug the machine from the power outlet before cleaning or servicing.
- To avoid electric shock, do not expose to rain or snow. Store, and use, indoors.
- Wear hearing protection if desired. The measured sound level of the MX 103 C is 79dB(A).
- Do not allow to be used as a toy. Close attention is necessary when used near children.
- Use only the manufacturer's recommended attachments.
- Inspect the power cord regularly for damage, such as cracking, ageing, or damaged insulation. Replace the power cord with the same type as original if any damage is found. Do not use with damaged cord or plug.
- Use approved chemicals only. Never use solvents.
- Do not let the pump run dry.
- If the machine is not working as it should, has been dropped, damaged, left outdoors or flooded with water, return it to a service center.
- Do not pull the machine by the cord, do not use the cord as a handle, close a door on the cord, or pull the cord around sharp edges or corners. Do not run the machine over the cord. Keep the cord away from heated surfaces. To unplug, grasp the plug, not the cord.
- Extension cords must be 12 gauge and no longer than 15 m. Replace the cord or unplug immediately if the ground prong becomes damaged.
- Never fill the tank with water above 54° C.
- Do not put any object into openings. Do not use with any opening blocked; keep free of dust, lint, hair, and anything that may reduce air flow.
- Keep loose clothing, hair, fingers, and all parts of body away from openings and moving parts.
- Do not pick up anything that is burning or smoking, such as cigarettes, matches, or hot ashes, or any health endangering dusts. Do not use to pick up flammable or combustible liquids such as gasoline or use in areas where they may be present.
- Turn off all controls before unplugging.
- Use extra care when cleaning on stairs.
- Liquid ejected at the spray nozzle could be dangerous as a result of its temperature, pressure, or chemical content.

INSPECTION:

Carefully unpack and inspect your MX 103 C for shipping damage. Each machine is tested and inspected before shipping. Any shipping damage incurred is the responsibility of the carrier. You should notify the carrier immediately if you notice damage to the box or to the machine or parts.

CLEANING SOLUTIONS:

We recommend liquid cleaning chemicals. Powder chemicals may be used, but unless mixed very thoroughly they could cause a build-up in the pump, lines, and/or quick disconnects. Any problem caused by a chemical build-up is not covered by warranty. Use a neutral cleaner with a pH between 6 and 10 to avoid premature wear of the pump, seals, and/or other components. Damage caused by the use of strong chemicals is not covered by the warranty.

MAINTENANCE:

For optimum performance flush the machine with clear water at the end of each working day. Once a month, minimum, run a flushing compound through the machine to break up any mineral or chemical build-up that may have formed. The vacuum motor, pump motor, and the pump do not require any scheduled maintenance; however, the motors may require replacement brushes after 1000 - 1500 hours. Clean the body with an all-purpose detergent, and protect it with an automobile interior polish. Lubricate the wheels, castors, and quick disconnects with an all purpose silicone spray.

PARTS AND SERVICE:

Repairs, when required, should be performed by your authorized distributor who maintains an inventory of original replacement parts and accessories. Call the distributor from whom you purchased this machine if you need parts and service. Be sure to specify the machine model. Have your serial number handy.

RECORD AND KEEP THE FOLLOWING INFORMATION

Model: MX 103 C

Serial Number: _____

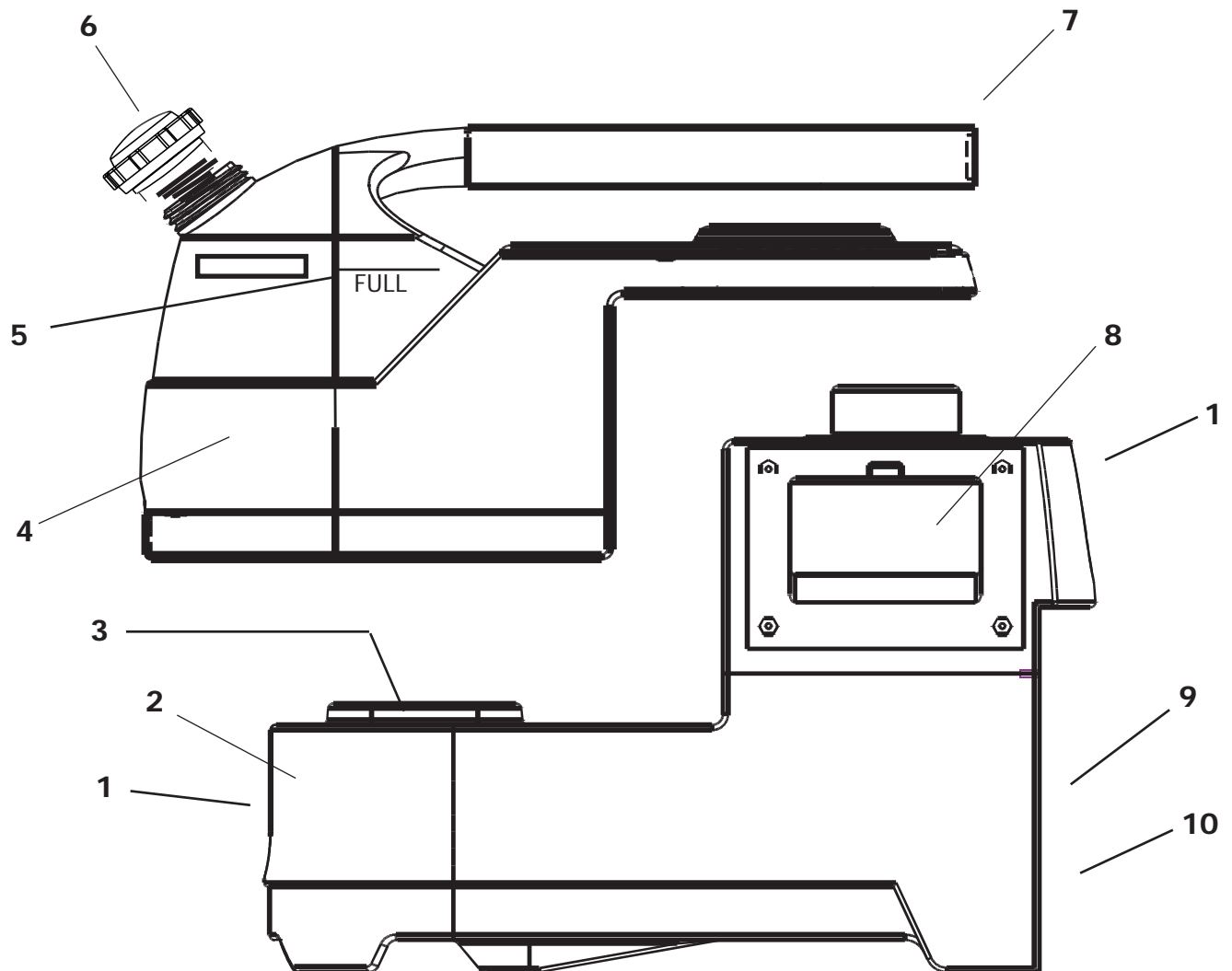
Purchase Date: _____

Write the name and phone number of your distributor:

(and be sure to register your warranty)

KNOW YOUR MACHINE

- 1 Latch. One latch on each end holds the body parts (tanks) together.
- 2 Solution tank.
- 3 Fill hole. This is where you put your cleaning solution. Machine holds 9 liters.
- 4 Recovery tank
- 5 Full indicator line. Do not let amount of the recovered solution go above this line.
- 6 Cap. Remove this cap to empty the recovery tank.
- 7 Handle to lift the machine and the vacuum hose connection point. Slide vacuum hose over handle.
- 8 Exhaust filters. These filters cut down on exhaust noise and prevent dirty air from blowing out. **NOTE:** Keep your filters clean. Replace as necessary.
- 9 Switches. Power switch and function selection switch.
- 10 Power cord.



SET-UP AND USE



WARNING

Use only nonflammable, commercial chemicals intended for machine application.

PROCEDURE

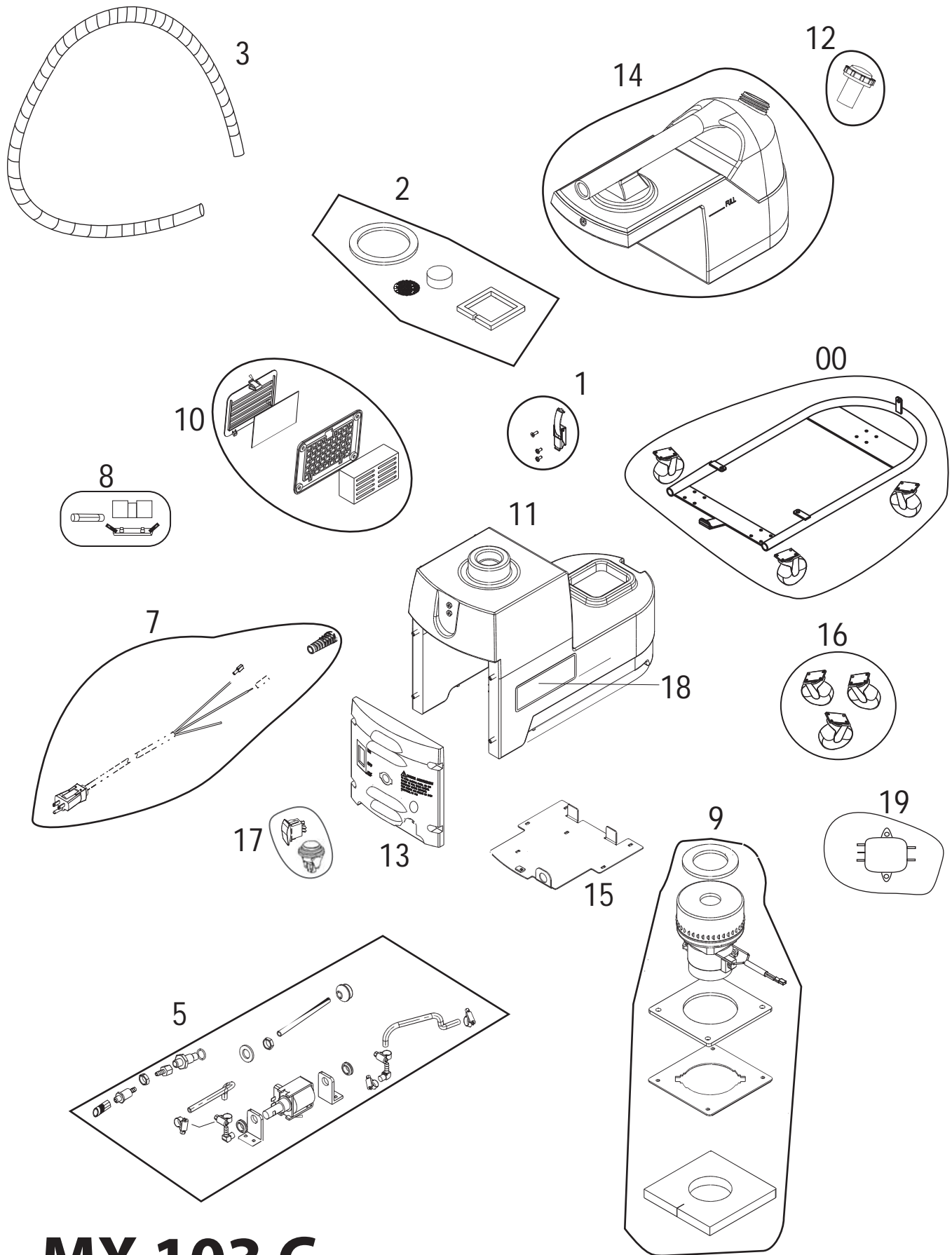
1. Soak up any excess liquids with a towel.
2. Test the cleaner on a small, inconspicuous area to make sure it will not damage the carpet or upholstery fibers.
3. Apply appropriate spotter solution to the area to be cleaned; follow directions on bottle.
4. Unsnap the recovery tank latches (2) and remove the recovery tank (4) from the machine.
5. Pour up to 9 liters of hot water into the solution tank (1). **NOTE:** liquid cleaning chemical can be added to the water if desired. Follow instructions on the chemical bottle for proper dilution. Do not mix powdered chemicals in the solution tank, mix them thoroughly in a bucket first. Undissolved powder can plug the solution pump, the hose, or the spray tool.
6. Re-install the recovery tank (4) and secure it with the latches (2).
7. Connect the hose assembly (6) to the machine; make sure the quick disconnects are locked together.
8. Plug the power cord into a properly grounded outlet.
9. Turn on the main power switch -- the push button . If the main switch is not turned on, the motors (pump and vacuum) will not turn on with the rocker switch.
10. Set the rocker switch to the UP position to turn on both the vacuum motor and the solution pump. **NOTE:** with the rocker switch in the DOWN position, only the vacuum motor will turn on. The middle position is OFF.
11. Place the cleaning tool on the stain and squeeze the trigger while pulling back on the tool. **NOTE:** do not oversaturate upholstery.
12. Start at outside edges of the stain and work toward the center. Use a dabbing, not a rubbing action.
13. Check the fluid level in the recovery tank (4) periodically. When the fluid reaches the recovery tank full indicator, turn OFF the power switch, unplug the power cord, and move the machine to a designated waste water "DISPOSAL SITE". **CAUTION!** Do not continue to use the machine after the recovery tank is FULL. Doing so will damage the vacuum motor and damage is NOT COVERED by WARRANTY.
14. When done with the job, remove the recovery tank from the machine, remove the lid, and empty the tank. Rinse the tank with clean water.
15. Tip the machine to empty the solution tank of any unused water or solution. Rinse the tank with clear water.
16. Dry the solution tank. Set the recovery tank back onto the machine and latch it in place. Leave the lid off the recovery tank so the tank can air out.



CAUTION

If water or foam comes out of the vacuum or exhaust, turn the machine off immediately.

Always unplug the machine when not in use and before servicing.



MX 103 C

30.03.2009 EU & UK

MX 103 C SPOTTER

PART LIST

220 - 240V

<u>ITEM</u>	<u>QTY</u>	<u>PART No.</u>	<u>DESCRIPTION</u>
00	1	600710300	Cart kit
1	1	600710301	Latch Kit
2	1	600710302	Gasket kit
3	1	56220047-CE	Hose, vacuum
5	1	600710305	Pump and plumbing kit
7	1	600710306	Power cord, UK plug
		600710307	Power cord kit, EU plug
8	1	600710308	Fuse kit
9	1	600710309	Vacuum motor kit
10	1	600710310	Exhaust Filter kit
11	1	600710311	Holding tank
12	1	600710312	Cap and diffuser kit
13	1	600710313	Front cover
14	1	600710314	Vacuum tank
15	1	600710315	Bottom cover
16	1	600710316	Castor kit
17	1	600710320	Switch kit
18	1	600710318	Label kit
19	1	600710319	RFI filter

MAINTENANCE SCHEDULE

	DAILY	WEEKLY	MONTH-	YEARLY	OTHER
CLEAN ALL FILTERS	X				
CHECK POWER CORD	X				
FLUSH OUT with DESCALER			X		
REPLACE VAC MOTOR BRUSHES					Around 1500 hours

TROUBLESHOOTING



ALWAYS UNPLUG THE MACHINE BEFORE DISCONNECTING OR CONNECTING ANY WIRES OR COMPONENTS.

IF PROBLEM OCCURS

CHECK THIS

NO SPRAY	Solution tank is empty. Clogged spray tip. Pump not running.
PUMP DOES NOT RUN	No power to pump. Test the switch. Test the pump motor. Debris plugging cleaning tool or vacuum hose. Recovery tank lid is not closed, is cracked or gasket is damaged.
LOW SUCTION	Recovery tank is warped or cracked. Debris impeding air movement on vac motor impellers.
NO SUCTION	No power to motor. Test the switch. Test the vacuum motor.

SPECIFICATIONS:

Rotomolded Body: Lifetime Warranty
Vacuum: 2-stage
VAC Shutoff: Ball float
Pump: 3.8 Bar / 55 psi, Oscillating
Suction: 444 W
Air Flow: 58 L/sec
Weight: 11 Kg with cart
Dimensions: 50.8 X 21.6 X 48.3 cm

MX 103 C

220 - 240V

NOTES: